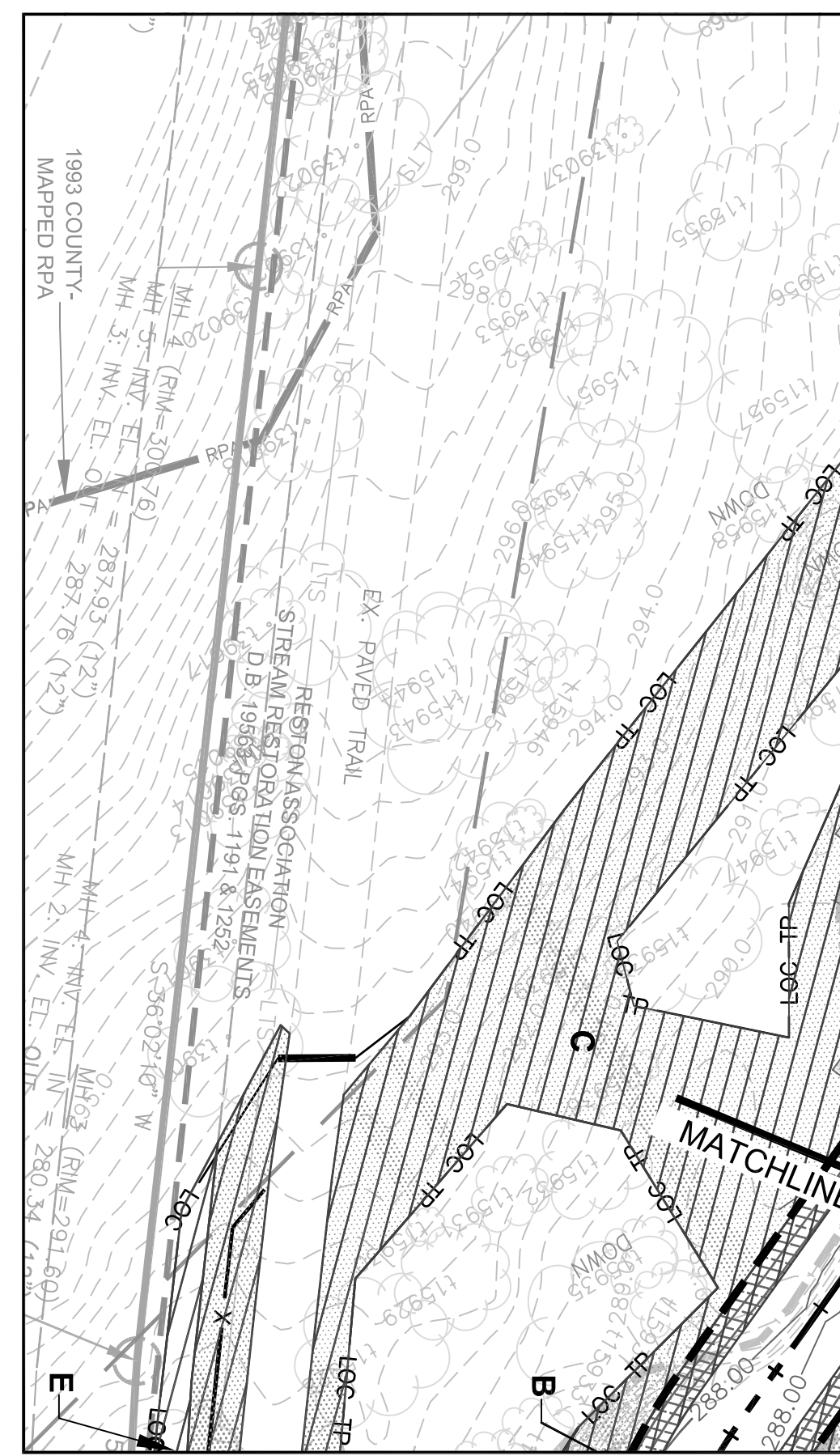


PLANTING LEGEND	
	PROPERTY BOUNDARY
	COMBINED STREAM ESMNT AND TEMP. GRADING & CONST. / INGRESS-EGRESS ESMNT
	STREAM ESMNT
	TEMP. GRADING & CONSTRUCTION ESMNT, / INGRESS-EGRESS ESMNT
	EXISTING FLOODPLAIN EASEMENT
	EXISTING SANITARY SEWER
	EXISTING CONTOURS (0.5')
	PROPOSED STREAM CENTERLINE
	PROPOSED TOP OF BANK
	LIMITS OF TREE SURVEY
	LIMITS OF CLEARING/TREE PROTECTION



GRAPHIC SCALE
1" = 20' FT

SEE THE PLANTING NOTES & DETAILS SHEETS FOR MORE INFORMATION.

THIS SHEET TO BE USED FOR PLANTING PURPOSES ONLY.

PLANTING AREAS	SYMBOL
STREAMSIDE ¹ 9,093 SF = 0.21 AC 2,528 LF	A, B
RIPARIAN FOREST ¹ 84,368 SF = 1.94 AC	C, D, F, H 2,3
RIPARIAN SEED MIX ¹ 10,035 SF = 0.23 AC	E, J 2,3
TURFGRASS SEED MIX 48,320 SF = 1.11 AC	G, K 2,3

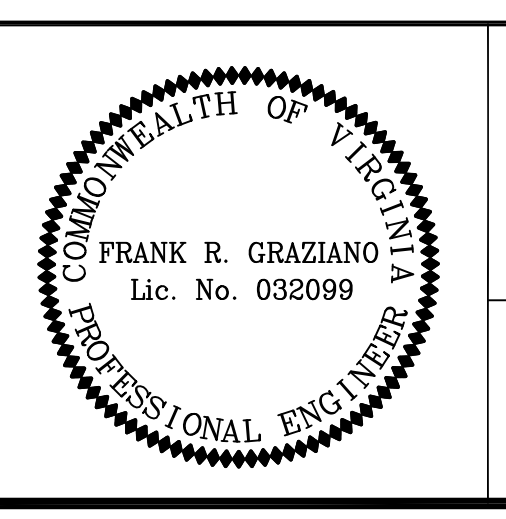
- SEED MIX SHALL BE DISTRIBUTED EVENLY THROUGHOUT ALL DISTURBED AREAS IN THE AMOUNT SPECIFIED ON THE VEGETATION SCHEDULE SHEET.
- AREAS H, J, & K SHALL NOT BE PLANTED UNLESS THE "ALTERNATE ACCESS" PATH IS UTILIZED.
- IT IS NOTED THAT A PORTION OF THE PROPOSED WIEHLE SOUTH (SOUTH) PLANTINGS (HEREIN) OVERLAP PROPOSED WIEHLE NORTH (NORTH) PLANTINGS (UNDER SEPARATE COVER). SPECIFICALLY, AREAS D, F, G, H, J, & K ARE DUPLICATE, AND SHALL BE RESOLVED AS FOLLOWS:
 - IF NORTH IS BUILT PRIOR TO SOUTH, OR NORTH IS ELIMINATED; PLANT PER THIS PLAN (WIEHLE SOUTH) WITHIN THE SOUTH LIMITS OF DISTURBANCE.
 - IF SOUTH IS BUILT PRIOR TO NORTH, PLANT PER THIS PLAN WITHIN THE LIMITS OF DISTURBANCE, WITH THE EXCEPTION THAT TREE PLANTINGS SHALL NOT BE PLACED WITHIN AREAS D, F, & H (IE, RIPARIAN SEED ONLY). FULL RIPARIAN REFORESTATION/TREE PLANTING SHALL BE ACCOMPLISHED UNDER NORTH CONSTRUCTION TO AVOID TREE PLANTING IN FUTURE CONSTRUCTION AREAS.

REVISIONS			Rev. By	App. By
No.	Date	Description		

Horizontal Datum: VCS NAD 83
Vertical Datum: NGVD 29
Boundary and Topo Source: WSSI and Fairfax Digital Data

Design: JTK
Draft: JTK
Approved: FRG

Computer File Name: 16 of 69



Northern Virginia Stream Restoration Bank
Colvin Run - Wiehle South
Fairfax County, Virginia

Planting Plan

Copyright © 2012 Wetland Studies and Solutions, Inc.

5300 Wellington Branch Drive, Suite 100 • Gainesville, VA 20155
Phone 703 679 5600 • Fax 703 679 5601
wetlandstudies.com